



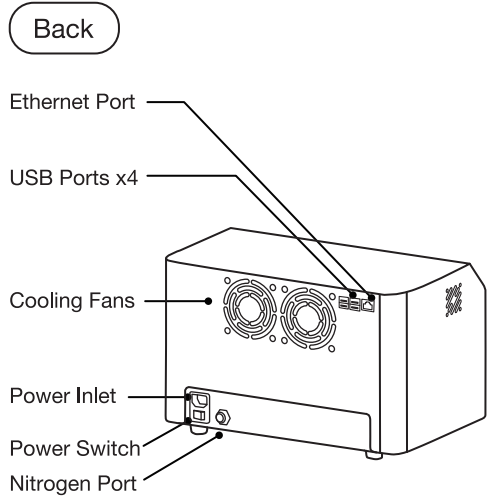
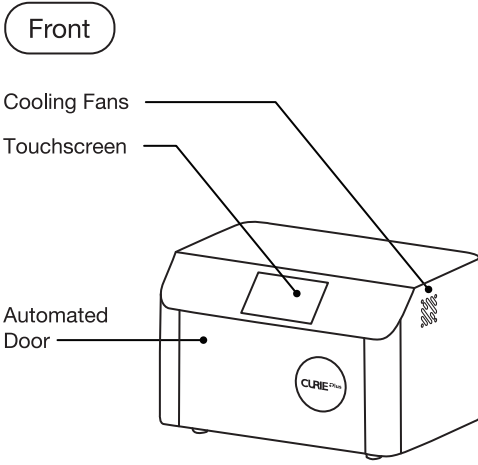
# CURIE <sup>+</sup>Plus

## Quick Start Guide

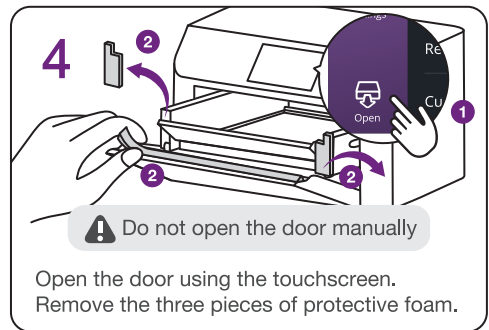
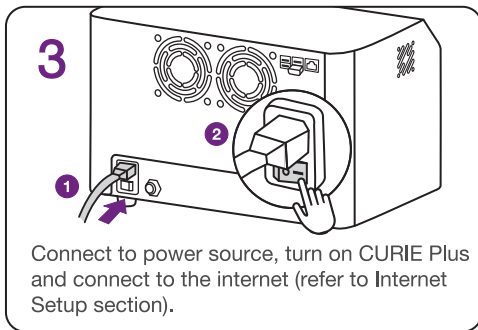
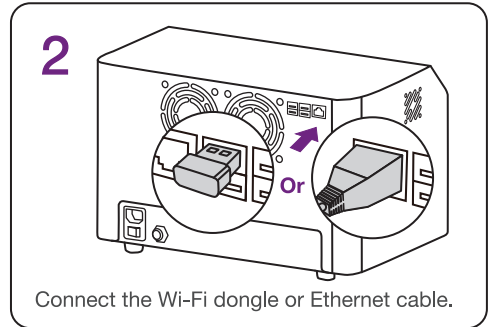
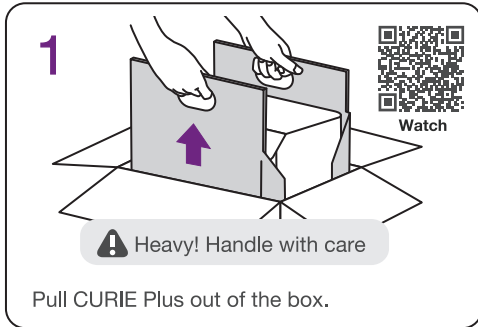


Register Your  
Device & Warranty

# Product Overview



## Setup Guide



Operate CURIE Plus in a dry, well-ventilated indoor environment at a maximum altitude of 2000 m (6561.7 ft), with a temperature range of 18°- 25° C (64°- 77° F), a maximum relative humidity of 80%, and a pollution degree of 2. The main supply voltage fluctuations must be ≤ 10%, with an overvoltage category II.

# Package Contents



CURIE Plus



N2 Cover



Glass Panel Box



Power Cable



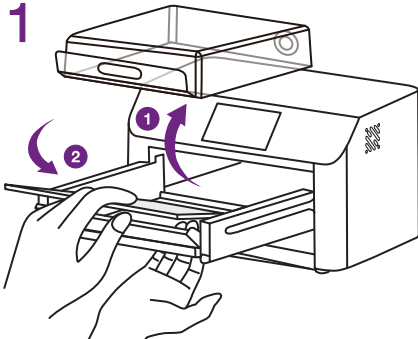
Ethernet Cable



Wi-Fi Dongle

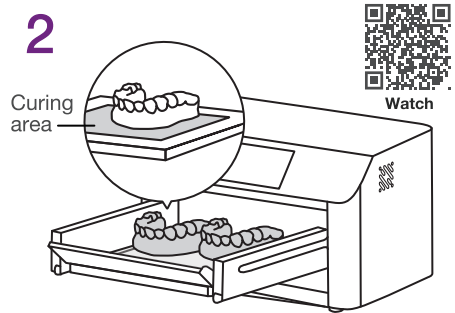
## Curing Process

1



Take out the N2 Cover, and place the glass inside the curing chamber. Use your hand to position the glass from the bottom.

2



**!** Do not stack applications

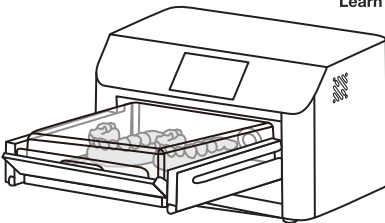
Place the applications flat inside the glass curing area.

3

Optional:  
For nitrogen process only



Learn More



Place the N2 Cover on top with the handle facing towards you.

4



**!** Keep hands away from door

Close the door using the touchscreen.

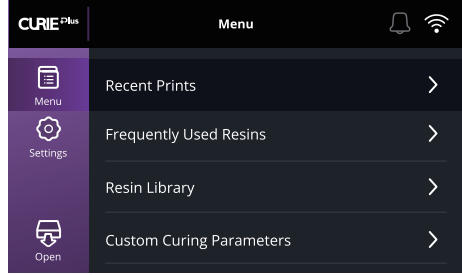


The maximum operation time for CURIE Plus is 20 minutes, with a minimum rest time of 15 minutes between curing cycles. CURIE Plus is equipped with Thermal Protection Mode, which may be activated if curing continuously at a maximum load for up to 20 minutes.

## Curing Parameters

There are 4 ways to set the curing parameters:

- **Recent Prints**  
Latest prints from your SOL or SOL Plus
- **Frequently Used Resins**  
10 most commonly used resins
- **Resin Library**  
Most up-to-date library
- **Custom Curing Parameters**  
User parameters setup



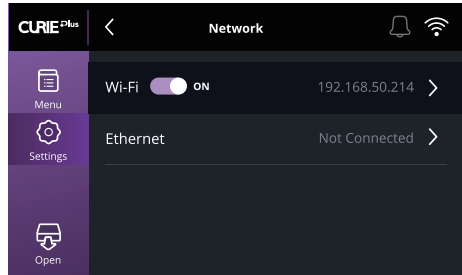
## Internet Setup

There are two ways to establish an internet connection:

- **Wi-Fi**
- **Ethernet**

If you have a SOL or SOL Plus:

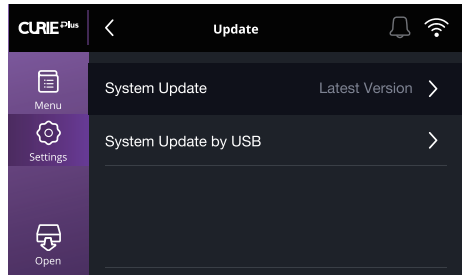
Before the printer has finished printing, connect CURIE Plus to the same network. CURIE Plus will receive the curing parameters of the successful prints in “Recent Prints”.



## Firmware Update

Update to the latest firmware version:

- **System Update via Internet** (recommended)
- **System Update by USB**



## Technical Specifications

Dimensions 36.6 (W) x 26 (D) x 23.4 (H) cm  
14.4 (W) x 10.2 (D) x 9.2 (H) in

Weight 12.2 kg  
26.9 lbs

Power Input 100-240VAC, 50-60Hz

UV Wavelength 365, 385, and 405 nm

Chamber Dimensions 20 (W) x 15 (D) x 6 (H) cm  
7.9 (W) x 5.9 (D) x 2.4 (H) in

LED Lights 65

