



CLEANI with Tank^{Plus}

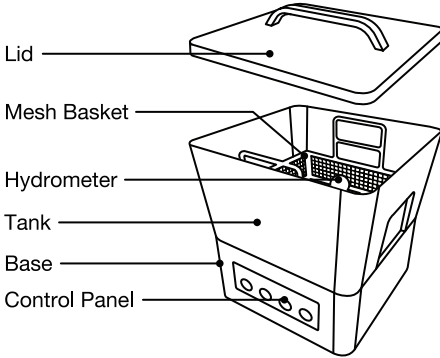
Quick Start Guide



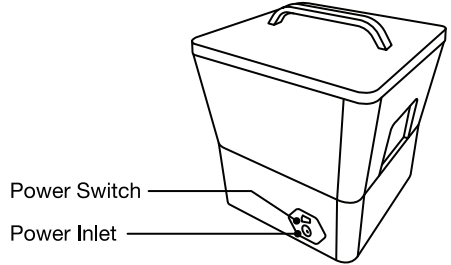
Register Your
Device & Warranty

Product Overview

Front

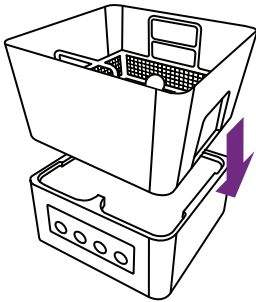


Back

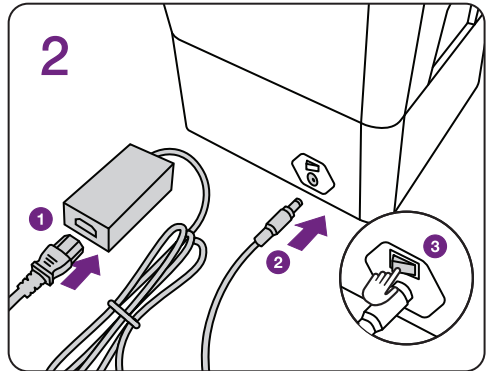


Setup Guide

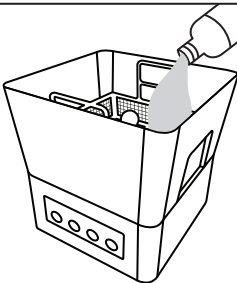
1



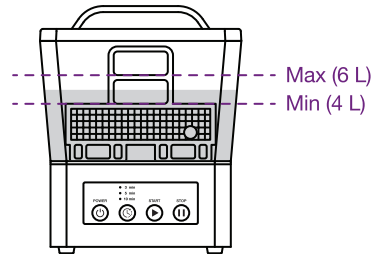
2



3



Fill the tank with 95% ~ 99% IPA with the hydrometer in the tank.



The alcohol level should cover the basket but should not exceed the middle bar of the handle.

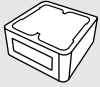


Keep alcohol away from ignition sources.

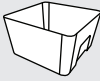


Always wear gloves when handling alcohol or uncured resin.

Package Contents



Base



Tank



Lid



Mesh Basket



Hydrometer

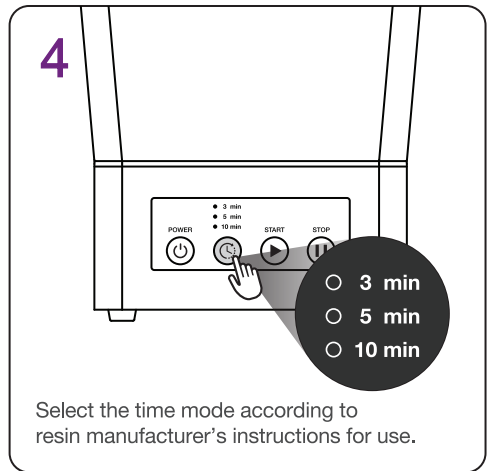
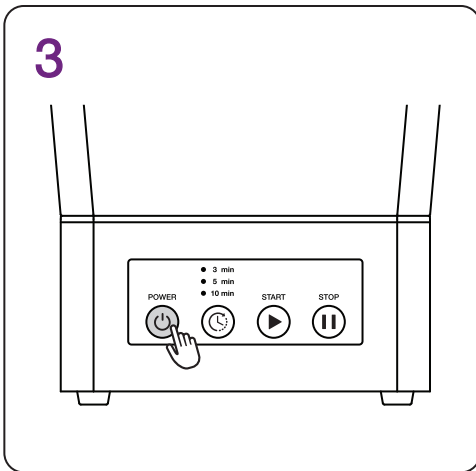
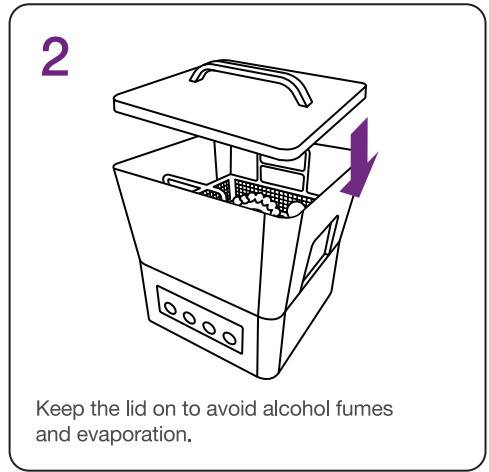
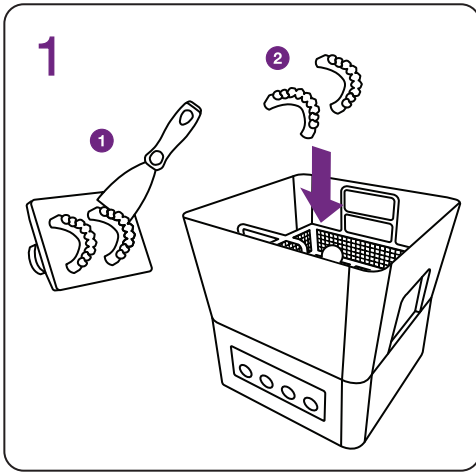


Power Cable



AC Adapter

Cleaning Process

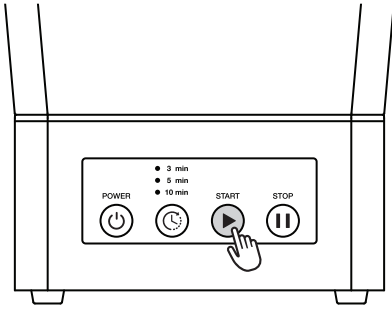


Use UV-filtered lights in your workspace to prevent unintended curing.

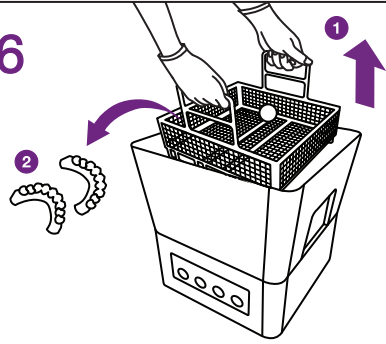


After cleaning is completed, remove and dry the applications by applying air to remove any remaining liquid.

5

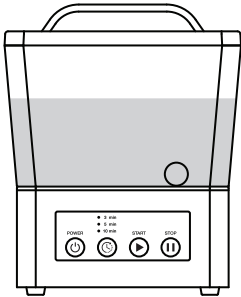


6

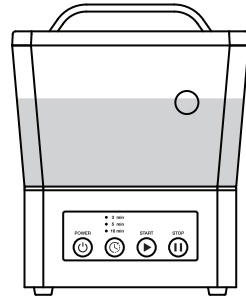


Remove the applications promptly after washing is completed. Do not let them sit in the alcohol for more than 10 minutes.

Hydrometer



The hydrometer remains submerged when the alcohol continues to be reusable.



The hydrometer floats to the surface when the alcohol is no longer effective and needs to be changed.

Technical Specifications

Dimensions	25 (W) x 24 (D) x 31 (H) cm 9.8 (W) x 9.4 (D) x 12.2 (H) in	Tank Size	25 (W) x 24 (D) x 20 (H) cm 9.8 (W) x 9.4 (D) x 7.9 (H) in
Weight	2.7 kg 6 lbs	Base Size	23 (W) x 23 (D) x 12 (H) cm 9.1 (W) x 9.1 (D) x 4.7 (H) in
Power Input	100-240VAC, 50-60Hz	Tank Volume	7 L
Rated Power	48 W	Time Control	3, 5, or 10 minutes

